

## General Guidelines:

For ease of viewing & operating, the mounting of the Holder (3) inside the panel door, should be in such a way that, the numbers on the Holder (3) and the Shim (8 or 9) are on the top side

While mounting the actuators (Push Button, Selector or Mushroom actuators) into the Holder (3), always hold the "Front ring" (17 or 21) only

### Conductor Cross-sections (Screw terminals):

- i) Finely Stranded Cable with end Sleeves: 2 x 0.5 to 1.5 sqmm
- ii) Solid Conductor: 2 x 1 to 2.5 sqmm
- iii) Solid Conductor with end sleeves: 2 x 0.5 to 0.75 sqmm
- iv) Finely Stranded cable with end sleeves: 2 x 1 to 1.5 sqmm (for compact variants)

### Terminal Screw:

- i) M3.5 for all variants except compact variants.  
Tightening torque: 0.8 to 1.2 Nm

- ii) M3 for Compact variants (Compact LED and Compact BA9s) Tightening torque: 0.8 Nm

Screwdriver blade width: 5.5 mm

### Permissible ambient temperature range:

In Operation: -25 °C to + 60 °C

Storage and transport conditions: -40 °C to +80 °C

### Degree of Protection:

IP65 : in general (exceptions below)

IP67 : Push Buttons, illuminated push buttons, and Pilot lights with protective caps.

IP54 : Key switches (Safety Locks with key mounting)

IP20 : Terminals of contact moduls and illumination modules (Contact blocks and lamp holder)

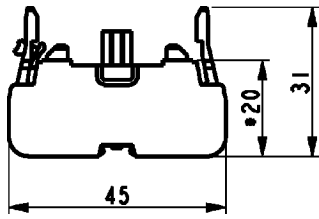
Supply input condition for the DC versions of 3SB5

Integrated LED and Compact LED illumination modules:

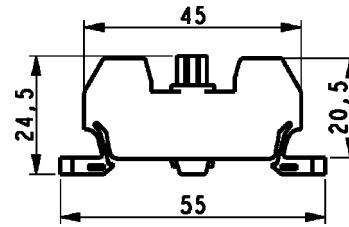
Input DC voltage: Filtered, Full wave, Bridge rectified.

<p>Normal Push Button Actuator with Holder, 1NC Contact Block and Integrated LED</p>	<p>Normal Push Button Actuator with Holder</p>
<p>Raised Push Button Actuator with Holder</p>	<p>Selector Actuator with Holder</p>
<p>Mushroom Twist to release Actuator with Holder</p>	<p>Mushroom Momentary Actuator with Holder</p>
<p>Key Actuator with Holder</p>	<p>2NO/2NC/1NO+1NC Contact Block (Front Mounting)</p>

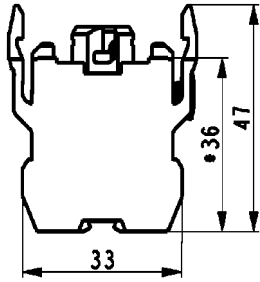
1NO/1NC Contact Block (Front Mounting)



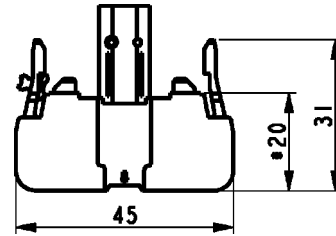
1 NC/1NO Contact Block (Base Mounting)



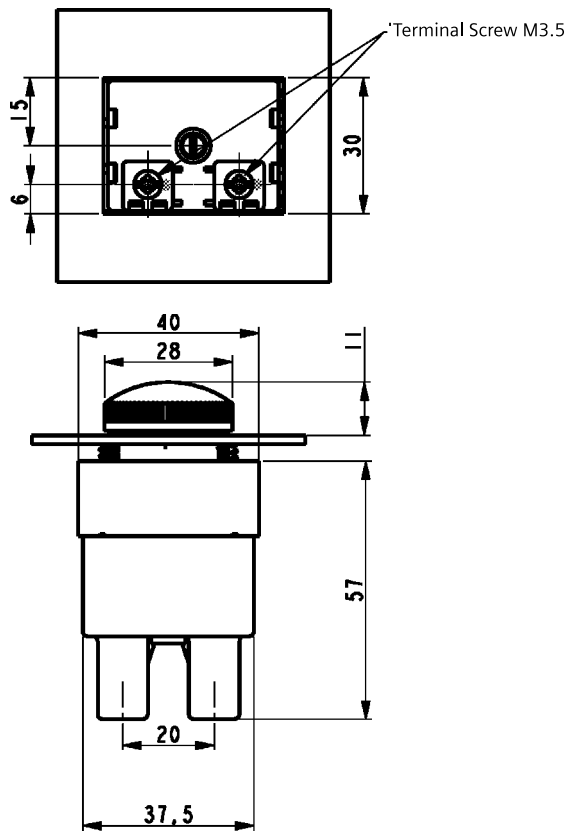
BA9s Lamp Holder



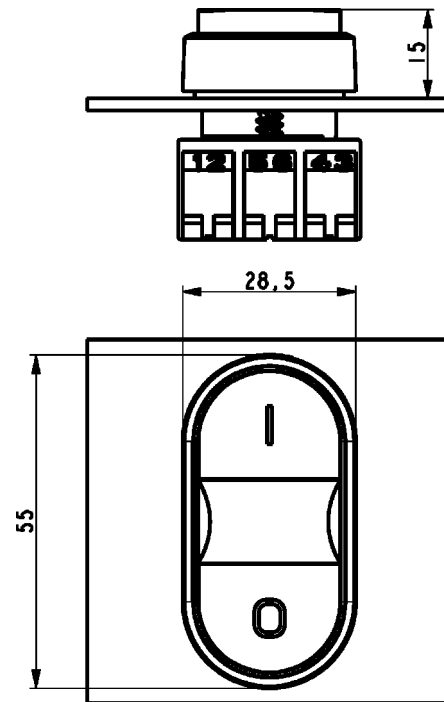
Integrated LED



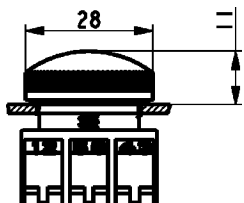
Wide Band LED with Holder and Lens Assembly



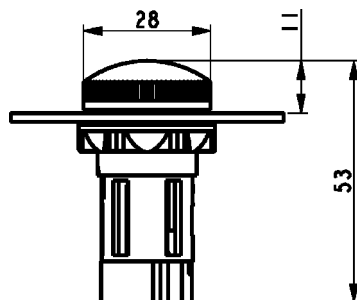
Twin Push Button Actuator with Holder



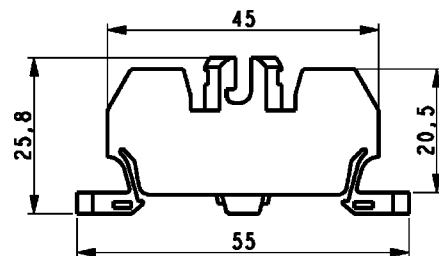
Lens assembly with Holder



Compact LED/BA9s Pilot Light illumination module

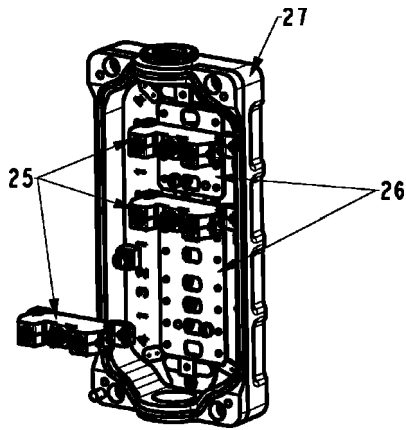


Lamp holder front connection

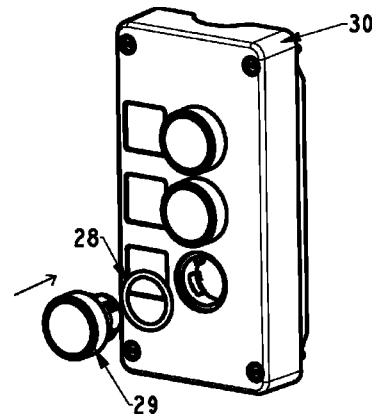


## Assembly of 3SB5 Enclosures

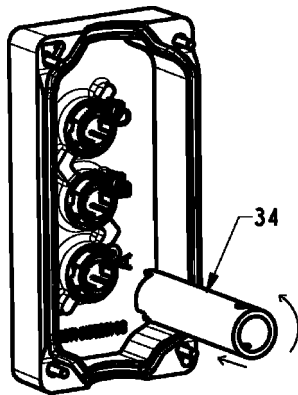
**Step 1:** Press fit the 'Front connection contact Blocks (25)' or 'Lamp Holders' (not shown) in the 'mounting plate (26)' slots of 'Lower housing assembly (27)'



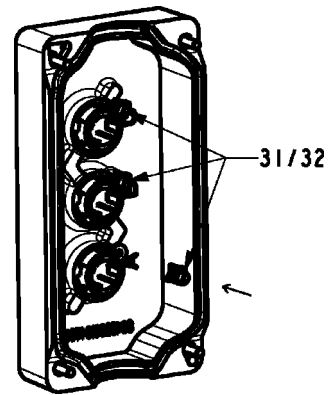
**Step 2:** Insert the 'O ring (28)' on the 'Actuator (29)'. And then insert that actuator inside the hole of 'Upper housing assembly (30)'.



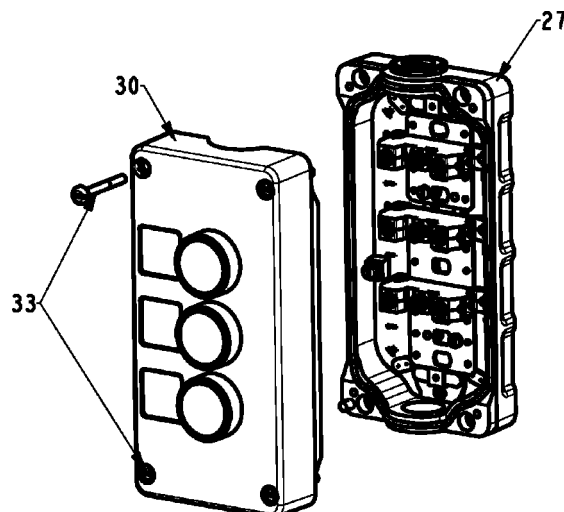
**Step 3:** By Pressing the actuator firmly from front, turn it anticlockwise from back, using the "Mounting tool (3SB5902-2BX), 34".



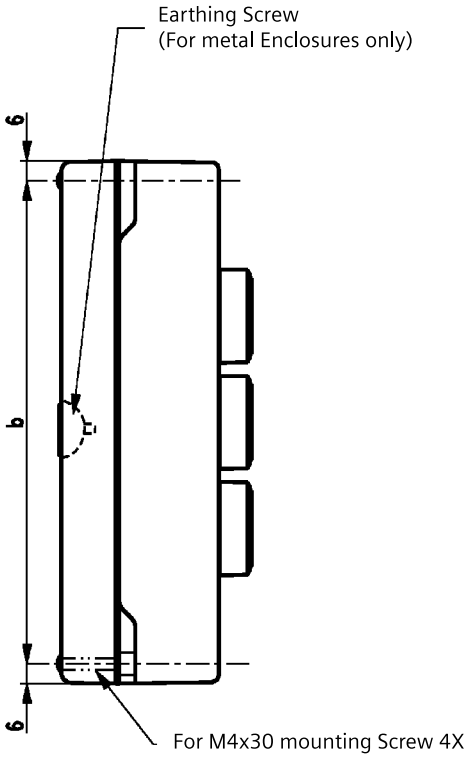
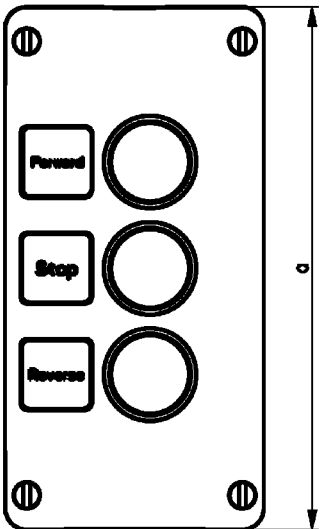
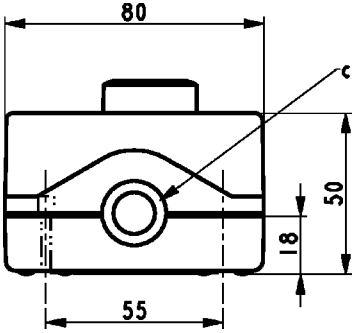
**Step 4:** Lock the actuator movement using Screw (31) in Plastic Push button enclosures or screw-washer assembly (32) in Metal Push button enclosures.



**Step 5:** Assemble the Lower housing assembly (27) and Upper housing assembly (30) and tighten the 4 screws (33) provided in Upper housing assembly (30) (Tightening torque = 1.5 Nm  $\pm$ 10%Nm)

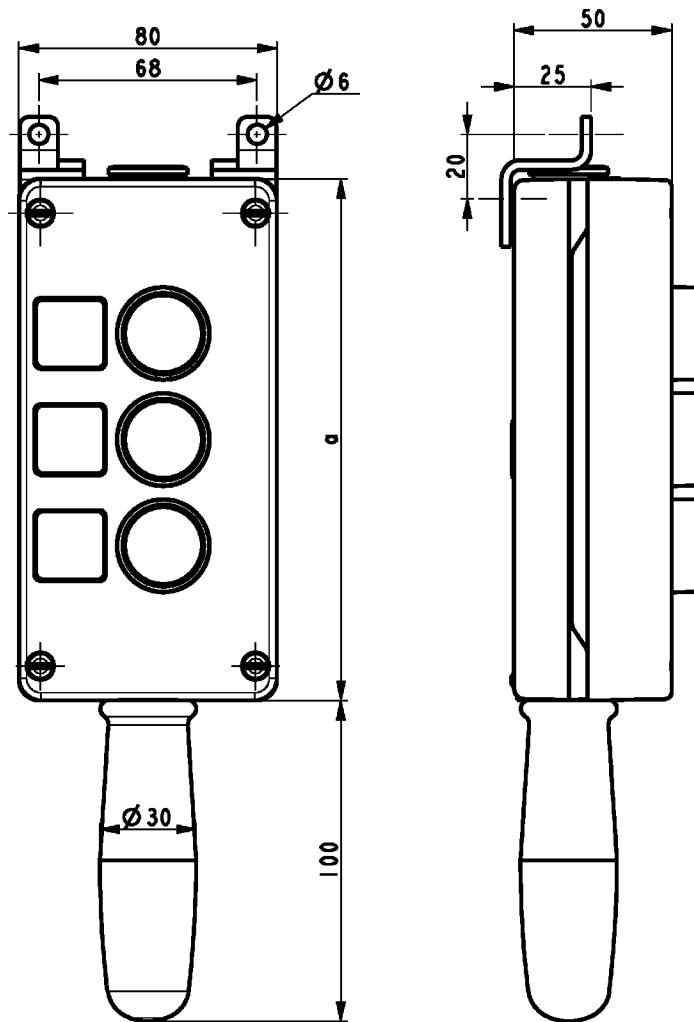


# Push Button Enclosures (Plastic & Metal)



Numbers of command points	a	b	c
1	88	76	M20
2	124	112	M20
3	162	150	M20
4	200	188	M25
6	276	264	M25

## Pendant Push button Enclosures (Metal only)



Numbers of command points	a
2	124
3	162

### Disposal

Siemens Products are environment friendly, which predominantly consist of recyclable materials.  
 For disposal we recommend disassembling and separation into following materials:  
**METALS** : Segregate into Ferrous & Non Ferrous types for recycling through authorised dealer.

**PLASTICS** : Segregate as per material type for recycling through authorised dealer.  
 Because of the long lifetime of Siemens products the disposal guidelines may be replaced by other national regulations when taking the product out of service.  
 The local customer care service is available at any time to answer disposal-related questions

### Siemens Ltd.

#### Industry Sector

LV Control & Distribution Products  
 Thane Belapur Road, Thane 400601  
 Fax: +91 22 27645627  
 E-mail: lvsg-rmktg.india@siemens.com

Customer Care Toll free no. 1800 220 987  
 Email: adscs.india@siemens.com